

DO YOU LIVE IN AN OLD BUILDING ? (built before 1949?)



DO YOU HAVE
YOUNG CHILDREN?
TAKE CARE !

LEAD POISONING **CAUTION !**

Paint used in buildings
built before
1949 may contain lead.
When it starts to
flake, it could cause
serious illness
in young children.
Lead poisoning has no
easy recognisable
symptoms.

Speak to your doctor about it.



The public health code
sets out emergency
measures against
lead poisoning.

OBTAIN
INFORMATION FROM:
The "DDASS"

service santé-environnement
(local public health office)

To have your child tested
CONTACT:

- your doctor
- your "centre PMI" (child care centre) or your school doctor
- your social worker

Your contact :

PINPOINT



Is there any flaking paint in your home or in the stairway?



Beware of paint dust!



PREVENT



Cover up flaking paint.

If you are having work done, be careful of dust and flakes, as they may be dangerous. Keep children away and clean floors with water.



Clean floors with a damp cloth. Air your home often to remove dampness.

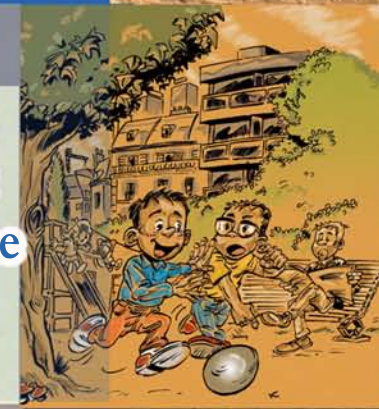


ACT



Wash children's hands often, especially before meals, and keep their nails cut short.

Take your children out of your home as often as possible.



Give them food rich in iron and follow your doctor's advice.

